

## 2024 Executive Officers Council (EOC) Board of Directors

### SENIOR OFFICERS

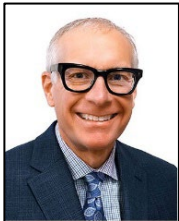
---



Natalie Fryer, *President*, '24  
HBA of Fayetteville (NC)  
[natalie@fayhba.org](mailto:natalie@fayhba.org)  
910-309-4245



Mike Erdmann, *Vice President*, '24  
HBA of Marion & Polk Counties (OR)  
[mike@homebuildersassociation.org](mailto:mike@homebuildersassociation.org)  
503-363-6676



Greg Lane, *Secretary*, '24  
BIA of Washington  
[GregL@biaw.com](mailto:GregL@biaw.com)  
360-352-7800



Jay Iverson, CAE, *Past President*, '24  
HBA of Iowa  
[jayiverson@hbaiowa.org](mailto:jayiverson@hbaiowa.org)  
515-278-0255

### DIRECTORS-AT-LARGE

---



Emily Bradley, *Director-at-Large*, '24-'26  
North Idaho BCA  
[emily@nibca.com](mailto:emily@nibca.com)  
208-765-5518



Maria Moore, *Director-at-Large*, '23-'25  
Fredericksburg BA (VA)  
[mmoore@fabava.com](mailto:mmoore@fabava.com)  
540-898-2730



Kathy Raab, *Director-at-Large*, '23-'25  
Metropolitan BA (WI)  
[kathy@mbaonline.org](mailto:kathy@mbaonline.org)  
262-436-1120



Jeffrey Smith, *Director-at-Large*, '23-'25  
HBA of Greater Tulsa (OK)  
[jsmith@tulsahba.com](mailto:jsmith@tulsahba.com)  
918-663-5820



Chassity Vega, *Director-at-Large*, '23-'25  
Greater Orlando BA (FL)  
[chassity@greaterorlandoba.com](mailto:chassity@greaterorlandoba.com)  
407-462-5026

## REGIONAL DIRECTORS

---



Carla Zapotek, *Region A, '24-'26*  
HBA of Bucks & Montgomery  
Counties (PA)  
[czapotek@hbahomes.com](mailto:czapotek@hbahomes.com)  
215-657-1300



Sheila Leach, *Region A, '23-'25*  
HBA of Northwest Connecticut  
[sheila@hbracentralct.com](mailto:sheila@hbracentralct.com)  
860-563-4212



Donna Barrett, *Region B, '24-'26*  
Charlotte-DeSoto BIA (FL)  
[donna@cdbia.com](mailto:donna@cdbia.com)  
941-625-0804



Cameron Moore, *Region B, '23-'25*  
Wilmington-Cape Fear HBA (NC)  
[cameron@wilmhba.org](mailto:cameron@wilmhba.org)  
910-799-2611



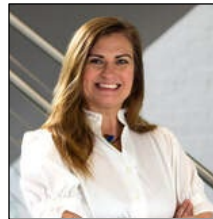
Steve Lains, *Region C, '24-'26*  
BA of Greater Indianapolis (IN)  
[SteveL@bagi.com](mailto:SteveL@bagi.com)  
317-236-6330



Chad Lawler, *Region C, '23-'25*  
Madison BA (WI)  
[clawler@maba.org](mailto:clawler@maba.org)  
608-469-1542



Meredith Townsend, *Region D, '24-'26*  
HBA of Greater Little Rock (AR)  
[meredith@hbaglr.com](mailto:meredith@hbaglr.com)  
501-758-3646



Taylor Jackson, *Region D, '23-'25*  
HBA of Greater Austin (TX)  
[taylor@hbaaustin.com](mailto:taylor@hbaaustin.com)  
512-454-5588



Nikki Giordano, *Region E, '24-'26*  
Anchorage HBA (AK)  
[Nikki@ahba.net](mailto:Nikki@ahba.net)  
907-522-3605



Gretchen Gutierrez, *Region E, '23-'25*  
Desert Valleys BA (CA)  
[gg@thedvba.org](mailto:gg@thedvba.org)  
760-776-7001

## APPOINTMENTS

---



Holly Fraccaro, *Presidential Appt.*, '24-'25  
HBA of Durham, Orange and Chatham  
Counties (NC)  
[holly@hbadoc.com](mailto:holly@hbadoc.com)  
919-493-8899



Bart Hansen, *Presidential Appt.*, '24-'25  
BIA of Clark County (WA)  
[bart@biaofclarkcounty.org](mailto:bart@biaofclarkcounty.org)  
360-694-1606



Lindsay Brown, *VP Appt.*, '24-'25  
Central Washington HBA  
[lbrown@cwhba.org](mailto:lbrown@cwhba.org)  
509-454-4006



Paul Kane, *Past President Rep.*  
HBA of Raleigh-Wake County (NC)  
[pkane@hbawake.com](mailto:pkane@hbawake.com)  
919-233-2033



Dan Knoup, *Presidential Appt.*, '24-'25  
HBA of Greater Des Moines (IA)  
[dank@dsmhba.com](mailto:dank@dsmhba.com)  
515-975-6427



Dave Nielsen, *VP Appt.*, '24-'25  
HBA of Greater Portland (OR)  
[daven@hbapdx.org](mailto:daven@hbapdx.org)  
503-684-1880



Ted Leighty, *Secretary Appt.*, '24-'25  
Colorado HBA  
[ted@hbacolorado.com](mailto:ted@hbacolorado.com)  
303-551-6700